

# Two Storey

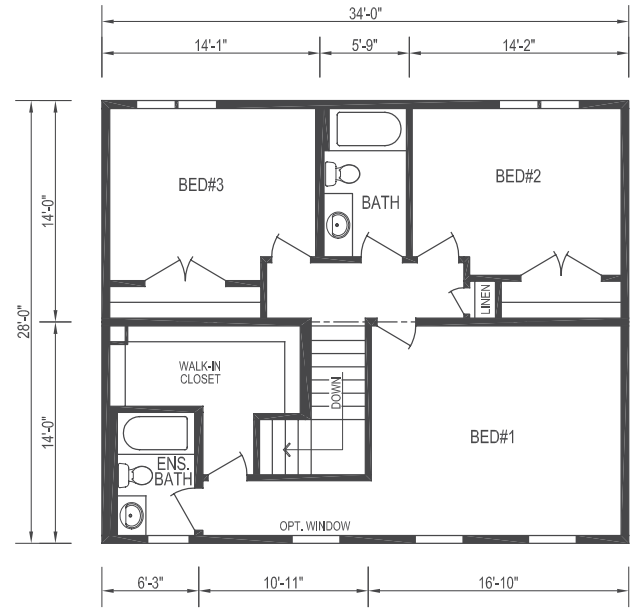
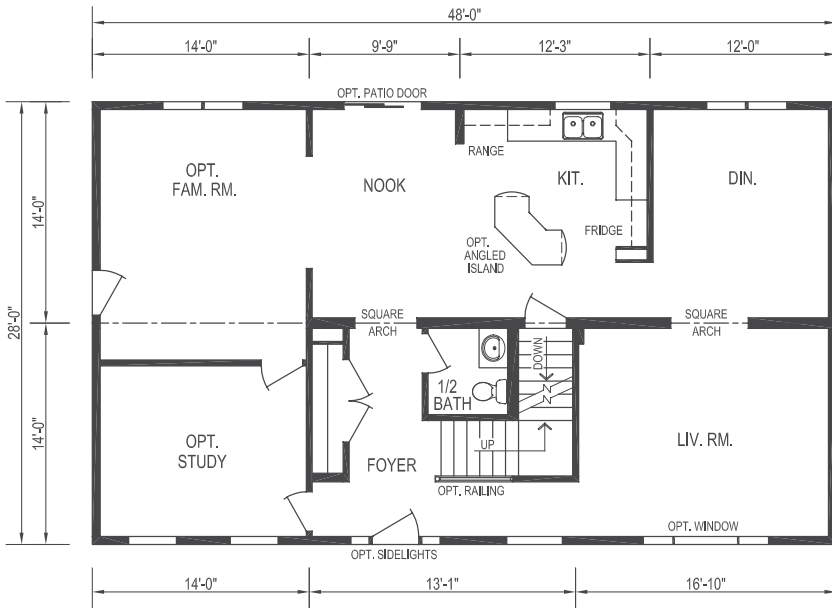


**34' X 28'**  
**First Floor 952 sq. ft.**  
**Second Floor 952 sq. ft.**  
**3 Bedrooms, 3 Baths**

**Exterior Options:**

- ¾ glass in front door
- ¾ length sidelights
- Oval window
- Round louvered vent
- 4' porch, railing and roof above
- Door and window pediments
- Optional roof pitch

Plan 3514



To learn more about this home or to have one custom designed for you contact a Maple Leaf Homes Retailer in your area • [www.mapleleafhomes.ca](http://www.mapleleafhomes.ca)