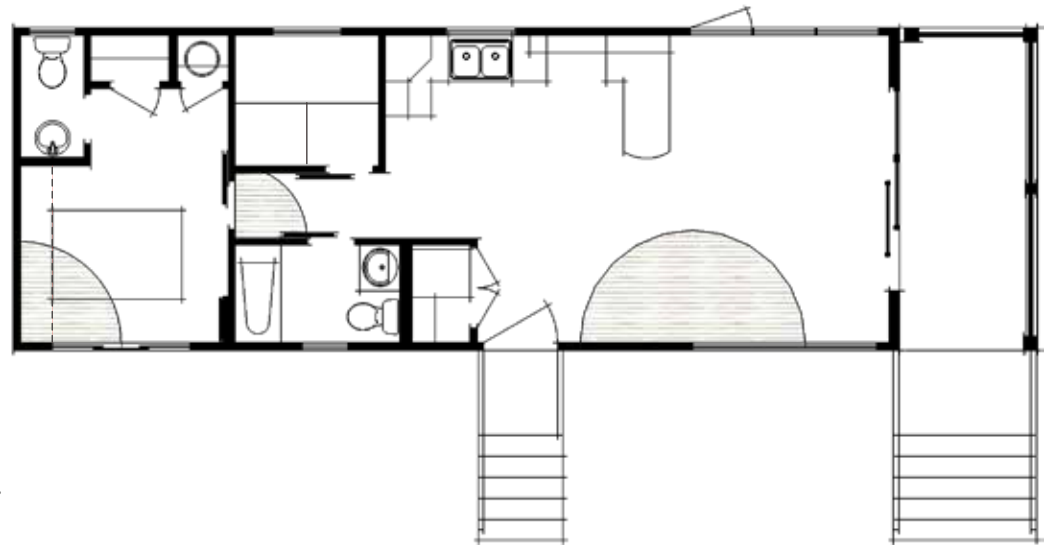


## OPTIONS

- Frame & Axles
- R-20 Floor Insulation
- R-12 Exterior Wall Insulation
- R-48 Roof Insulation includes 2" Polyurethane Spray Foam
- Laminate & Cushion Floor
- White DecTec Roof Membrane
- Vertical Vinyl Siding
- White Vinyl Custom Windows
- White Flat Stock Interior Trim
- Santa Fe Interior Doors with Brushed Aluminium Barn Style Hardware
- Upgrade Lighting package
- Stainless Steel Fridge
- Stainless Steel Propane Range with Rangehood
- Atlantic Square Cabinets - Silver Pacific Stain
- Optional Air Conditioning
- Rough in for Stackable Washer/ Dryer
- Propane Furnace c/w optional Air Conditioning
- 10 Gallon Water Heater
- 50 Amp Electrical Service
- 6' Covered Porch c/w Gass Railing
- Exterior Steps & Railing by others



For inquiries in Moncton and greater area contact:

**ERIKA JONES, 506.531.5559, [JONES@ROYALLEPAGE.CA](mailto:JONES@ROYALLEPAGE.CA)**

For all other areas contact Maple Leaf Homes or a retailer near you.